



POWERMAT

Introduction



As a trailblazer in the global landscape of manufacturing, **POWERMAT** group stands at the forefront, renowned for its innovation and excellence in crafting Low Voltage isolators, Bus-bar supports, and tailored molded products.



- **PRESENCE ACROSS ASIA, EUROPE, MIDDLE-EAST & NORTH-AMERICAS**
- **NETWORK OF 30 DISTRIBUTORS AND DEALERS ALL OVER INDIA**
- **10 DISTRIBUTORS IN EUROPE, 10 IN ASIA, 4 IN MIDDLE-EAST & 2 IN AMERICAS**
- **CURRENTLY HAVING 3 MANUFACTURING UNITS IN BAHADURGARH, HARYANA**



OUR VISION & MISSION

“Empowering Innovation in Insulation Materials”



Our mission is to provide world class products & services to our customers by remaining true to our core values of quality, integrity & customer satisfaction

POWERMAT TIMELINE

HISTORY OF **POWERMAT** GROUP OF COMPANIES

1986



POWERMATIC

Company was established to trade products used in LV control panels.

1991



**POWERCAM
ELECTRICALS PVT.
LTD.(Unit-1)**

First isolators manufacturing unit setup in New Delhi which was later shifted to Bahadurgarh, Haryana

2011



**PEX ENGINEERING
LLP**

Setup to make all kinds of metallic inserts & other kind of metal components used in control panels

2023



**POWERCAM
ELECTRICALS PVT.
LTD. (Unit-2)**

New manufacturing site in Bahadurgarh with total coverage area of more than 240,000 sq. ft.



INFRASTRUCTURE



Head Office

Total Area : 1470 sq. Feet

Covered Area : 5880 sq. feet

Unit-1

Total Area : 65,000 sq. Feet

Covered Area : 1,00,000 sq. feet

Office Block : 10,000 Sq. Feet



Unit-2

TOTAL AREA : 2,70,000 sq. Feet

Covered Area : 2,40,000 sq. feet

Office Block : 40,000 Sq. Feet

Team **POWERMAT**



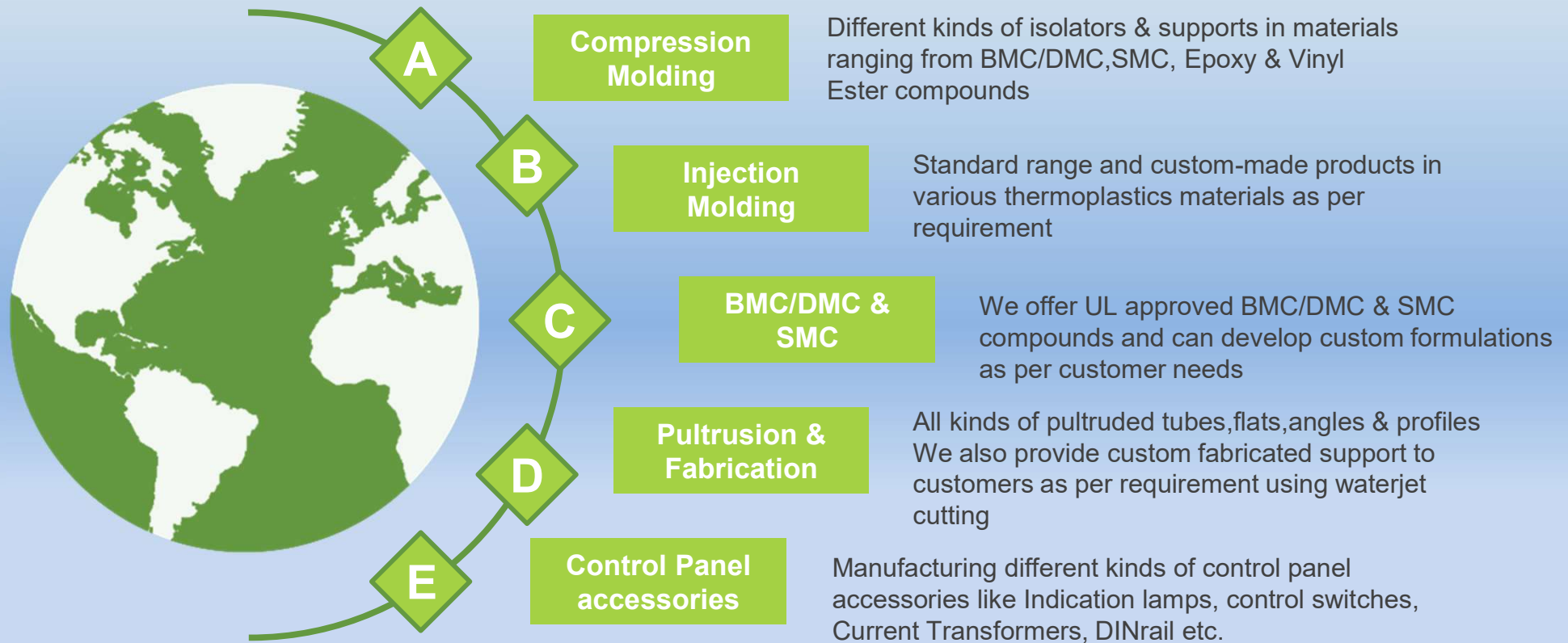
Head Office

- Admin Staff – 10
- Marketing Staff - 10

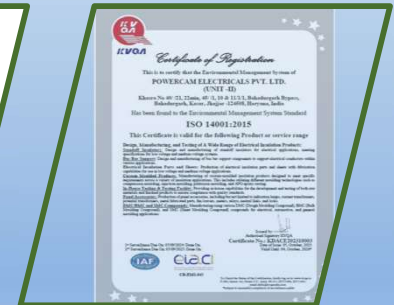
Manufacturing Unit

- Admin staff – 15
- Engineering team – 20
- Skilled Workforce – 300

POWERMAT product range



BMC/DMC & SMC COMPOUND



POWERMAT has its own compounding shop where different formulations for BMC/DMC and SMC are developed and have standard UL certified grades. The BMC/DMC and SMC materials produced are fully compliant with European Union directive 2002/95/EC for Restriction of use of Hazardous Substance in electrical and electronic equipment (RoHS)



8 High Speed vertical mixtures

10 Sigma Blade mixers for BMC/DMC

1 Automatic SMC line

Existing production capacity is up to 10 Tons of BMC/DMC & 8 Tons of SMC per day.



GLOW WIRE IGNITION TESTER



HOT WIRE IGNITION TESTER



COMPARATIVE TRACKING INDEX TESTER



FLAMMABILITY TESTER



POWERMAT has in-house testing facilities for raw materials like SMC, DMC and other plastic components for physical, mechanical and electrical properties as per ASTM, IEC, JIS and UL test methods.

HEAT DISTORTION TEMPERATURE



TEST LAB EQUIPMENT LIST

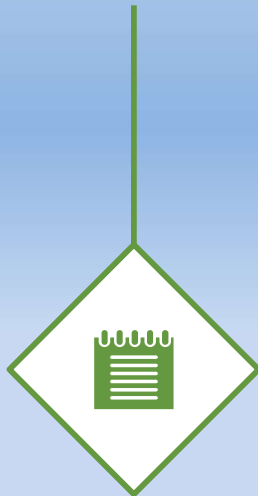
- Glow Wire Ignition
- Hot Wire Ignition
- Dry Arc Ignition
- Incline plane track testing
- BDV up to 100Kv
- Impulse Testing up to 40Kv
- Heat Distortion Temperature testing
- Compressive Strength up to 100 tons
- UTM up to 40 tons
- Torque Testing equipment



Advantage with **POWERMAT** custom BMC/DMC & SMC formulations

Collect requirement

We collect all the functional requirements from the customer about the product & its application

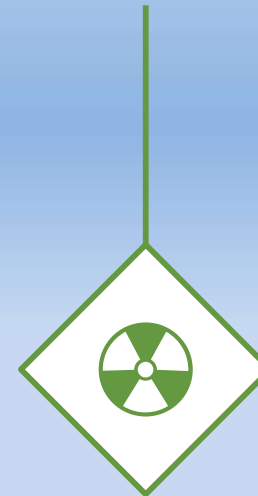


Formulate

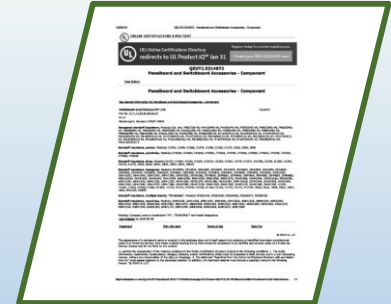
We develop most cost-effective in-house formulation to fulfill all the requirements & test the compound in our lab on all required mechanical & electrical parameters

Deliver

We work with our customer during the trial & approval process until all testing is completed & material is approved



STAND-OFF ISOLATORS & BUS-BAR SUPPORTS



POWERMAT has capacity to manufacture Stand-Off Isolators & Busbar supports in DMC, SMC, POLYAMIDE & EPOXY.

Other than our standard range we also do custom molding as per customer needs.

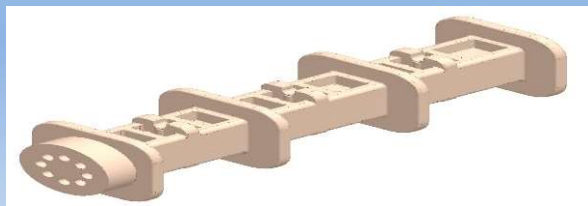
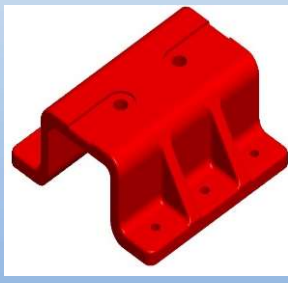
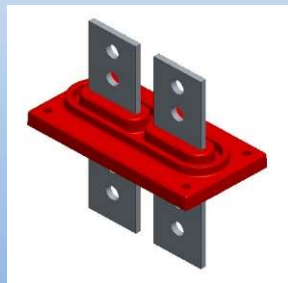
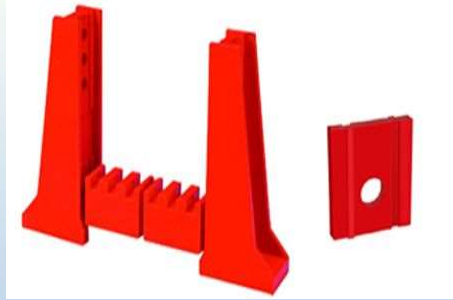
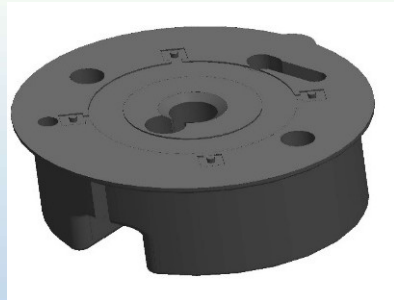
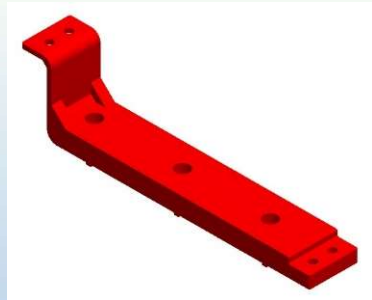




Current Infrastructure

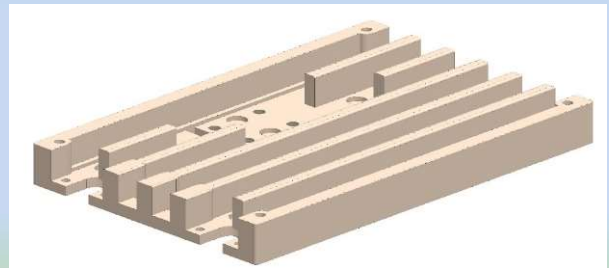
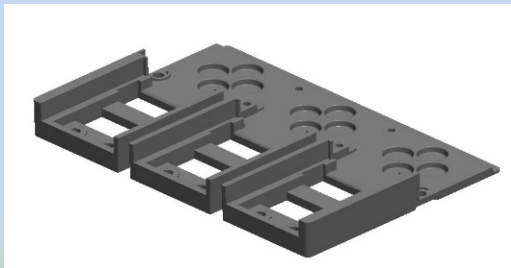
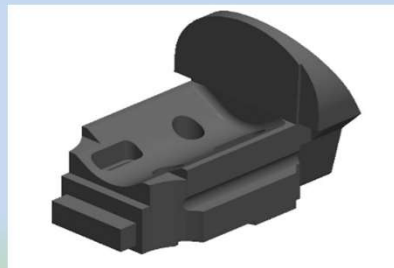
- 45 Compression Molding machines ranging from 25 to 1000 Tons. We can mold any part up to 1000mm X 1000 mm size.
- 10 Thermoplastic Injection Molding machines ranging from 40 to 220 Tons. Maximum shot weight of up to 600gms of Nylon.
- 1 Thermoset Injection Molding machine of 210 Ton. Maximum shot weight of up to 600gms of BMC.
- 2 Automatic Pressure Gelation (APG) machines. Maximum shot weight of up to 4000gms of epoxy.





**Standard
& Custom
Molded
products**

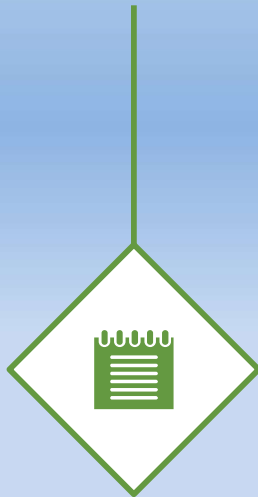
- All different kinds of Stand-off range available in DMC/BMC & Nylons
- All different kinds of Bus-bar supports available in SMC, DMC/BMC & Nylons
- Custom designed products in DMC/BMC, SMC, G160, Super-track Material, Thermoplastics like Nylons, PBT, PPS & many other custom-tailored materials



Advantage with **POWERMAT** custom molded products

Collect requirement

We collect all the functional requirements from the customer about the product & its application

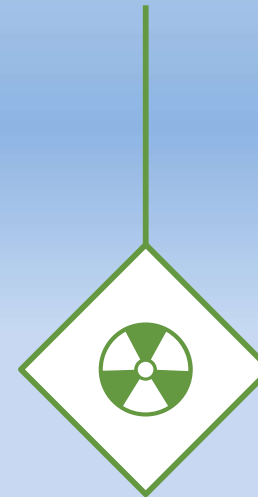


Design , Develop & Test

We develop most cost-effective in-house designs & tooling's to fulfill any custom molding needs & can test prototypes in our lab on all required mechanical & electrical parameters

Deliver

We work with our customer during the trial & approval process until all testing is completed & product is approved



UTM TESTING



TORQUE TESTING MACHINE



COMPRESSION TESTING



Hi-Pot TESTING



POWERMAT has In-House facility to test molded products both mechanically & electrically

High-voltage & BDV TESTER



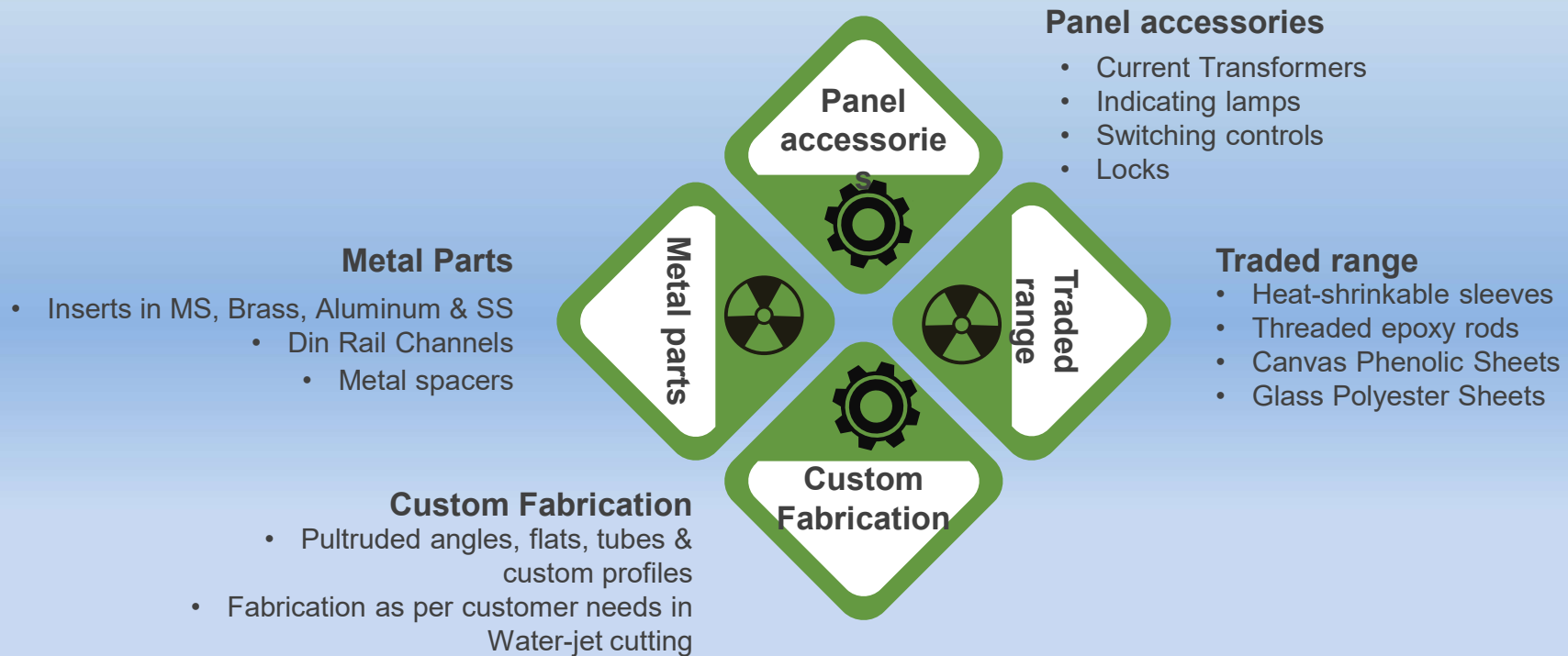


In-house Toolroom Infrastructure

- 4 LATHE MACHINE
- 2 MANUAL SURFACE GRINDER
- 1 AUTOMATIC SURFACE GRINDER
- 4 VERTICAL MACHINING CENTRE (VMC)
- 1 CNC TURNING LATHE
- 2 MILLING MACHINE
- 3 SPARK EROSION MACHINE (EDM)
- 2 WIRE-CUT MACHINE



OTHER PRODUCTS



Current Transformer MANUFACTURING



Current Transformer TESTING



INDICATING LAMPS MANUFACTURING



INDICATING LAMPS TESTING



POWERMAT Electronics
manufacturing section

PULTRUSION MACHINE



PU FOAM GASKETING MACHINE



Water-jet FABRICATION



POWERMAT Pultrusion & Fabrication section

PULTRUDED PROFILES





METAL DEPARTMENT

Current Infrastructure

- 30 Traub machines
- 4 Sliding-head turning machines
- 12 Semi-Automatic Tapping machines
- 10 Manual Tapping machines
- 3 Automatic Din Rail Roll-forming machines



AUTOMATIC VISUAL INSPECTION M/C



METAL INSERTS INSPECTION DEPARTMENT

Every insert being manufactured is 100% inspected for electroplating defects, GO/NO-GO & thread length

THREAD VIABILITY INSPECTION



SALT-SPRAY TESTER



HARDNESS TESTER





Renovation of Village Schools: Full responsibility taken for the renovation of two village schools, enhancing educational infrastructure for local communities.

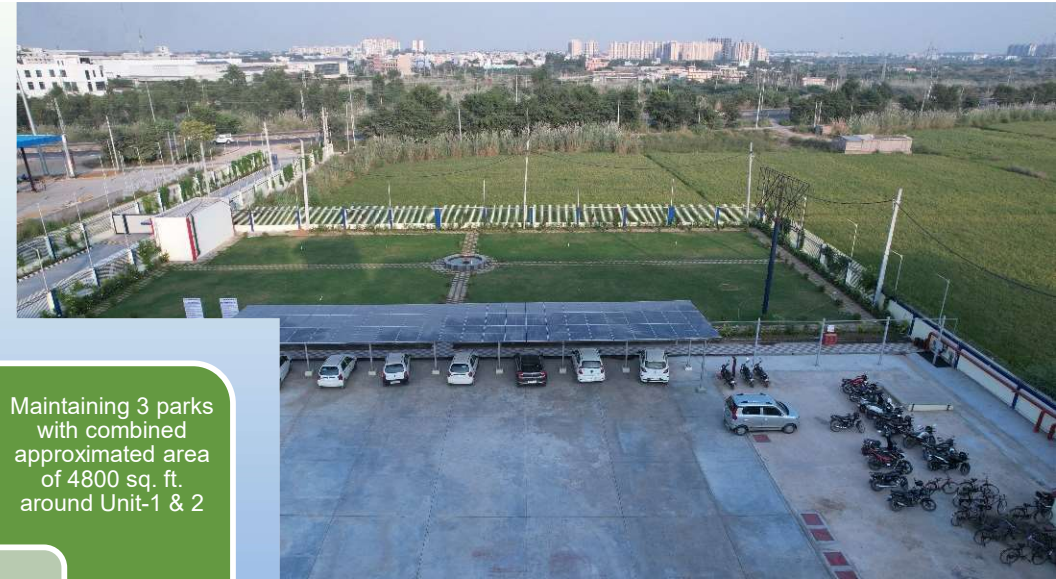
Scholarships for Meritorious Students: Distribution of scholarships to recognize and support the academic achievements of deserving students, fostering educational growth and opportunities.

CSR initiatives:

Donation of Beds to Orphanage for Girls: Contribution of beds to an orphanage catering to girls, ensuring comfortable living conditions and promoting their well-being and care.

Building Washrooms for Girl Students: Constructed essential washroom facilities for girl students in schools, promoting hygiene and ensuring a conducive learning environment.





Approximately 1000 trees planted all around Unit-2

Maintaining 3 parks with combined approximated area of 4800 sq. ft. around Unit-1 & 2

**Environmenta
I initiatives**

Installed Rooftop solar plant of 250 Kw capacity

Made car parking shed into solar shed





ANY QUESTIONS?

THANK YOU

FIND OUT MORE ABOUT US

ON OUR WEBSITE

WWW.POWERMINDIA.COM

