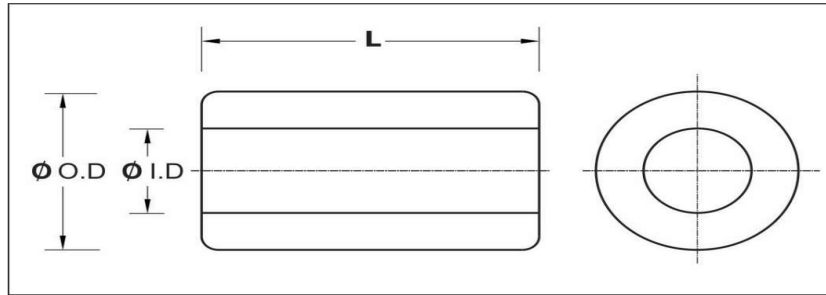


## Through Hole Type ( PCS Series )



POWERMAT code	Dimension		
	L	O.D	I.D
SPACER FOR M2			
PCS/04/122/L3	3	4	2.2
PCS/04/122/L4	4	4	2.2
PCS/04/122/L5	5	4	2.2
PCS/04/122/L6	6	4	2.2
PCS/04/122/L7	7	4	2.2
PCS/04/122/L8	8	4	2.2
PCS/04/122/L9	9	4	2.2
PCS/04/122/L10	10	4	2.2
PCS/04/122/L11	11	4	2.2
PCS/04/122/L12	12	4	2.2
PCS/04/122/L13	13	4	2.2
PCS/04/122/L14	14	4	2.2
PCS/04/122/L15	15	4	2.2
PCS/04/122/L18	18	4	2.2
PCS/04/122/L20	20	4	2.2
PCS/04/122/L25	25	4	2.2
PCS/04/122/L30	30	4	2.2

POWERMAT code	Dimension		
	L	O.D	I.D
SPACER FOR M 2.5			
PCS/05/127/L3	3	5	2.7
PCS/05/127/L4	4	5	2.7
PCS/05/127/L5	5	5	2.7
PCS/05/127/L6	6	5	2.7
PCS/05/127/L7	7	5	2.7
PCS/05/127/L8	8	5	2.7
PCS/05/127/L9	9	5	2.7
PCS/05/127/L10	10	5	2.7
PCS/05/127/L11	11	5	2.7
PCS/05/127/L12	12	5	2.7
PCS/05/127/L13	13	5	2.7
PCS/05/127/L14	14	5	2.7
PCS/05/127/L15	15	5	2.7
PCS/05/127/L18	18	5	2.7
PCS/05/127/L20	20	5	2.7
PCS/05/127/L25	25	5	2.7
PCS/05/127/L30	30	5	2.7

POWERMAT code	Dimension		
	L	O.D	I.D
SPACER FOR M3			
PCS/06/132/L3	3	6	3.2
PCS/06/132/L4	4	6	3.2
PCS/06/132/L5	5	6	3.2
PCS/06/132/L6	6	6	3.2
PCS/06/132/L7	7	6	3.2
PCS/06/132/L8	8	6	3.2
PCS/06/132/L9	9	6	3.2
PCS/06/132/L10	10	6	3.2
PCS/06/132/L11	11	6	3.2
PCS/06/132/L12	12	6	3.2
PCS/06/132/L13	13	6	3.2
PCS/06/132/L14	14	6	3.2
PCS/06/132/L15	15	6	3.2
PCS/06/132/L18	18	6	3.2
PCS/06/132/L20	20	6	3.2
PCS/06/132/L25	25	6	3.2
PCS/06/132/L30	30	6	3.2

POWERMAT code	Dimension		
	L	O.D	I.D
SPACER FOR M4			
PCS/08/142/L3	3	8	4.2
PCS/08/142/L4	4	8	4.2
PCS/08/142/L5	5	8	4.2
PCS/08/142/L6	6	8	4.2
PCS/08/142/L7	7	8	4.2
PCS/08/142/L8	8	8	4.2
PCS/08/142/L9	9	8	4.2
PCS/08/142/L10	10	8	4.2
PCS/08/142/L11	11	8	4.2
PCS/08/142/L12	12	8	4.2
PCS/08/142/L13	13	8	4.2
PCS/08/142/L14	14	8	4.2
PCS/08/142/L15	15	8	4.2
PCS/08/142/L18	18	8	4.2
PCS/08/142/L20	20	8	4.2
PCS/08/142/L25	25	8	4.2
PCS/08/142/L30	30	8	4.2

- All Dimensions are in mm only.
- Tolerance is applicable as per DIN Standard 2768.

-----*Global Commitment*